

"GPK goals and objectives are to provide vessel owners and clients with a reliable, cost effective, safe solution for the operation of their marine assets. Engaged in the offshore marine industry, specializing but not limited to in liftboat activities."

**M/V AMBERJACK
205 CLASS LIFTBOAT**

GENERAL INFORMATION

Built : Sun Contractors, Harvey, Louisiana, USA Date Built 1981
 Refurbished : 2008 by MIS shipyard, Sharjah, U.A.E.
 Port of Registry : Panama City
 Flag : Panama
 Call Sign : HO-5413
 Ship ID : 34976-10
 Class Society : DNV
 Type of Vessel : Self Propelled, Self-elevating 205' liftboat

PRINCIPAL DIMENSIONS

	Meters	Feet
Length Overall	: 39.62	130'
Breadth	: 21.03	69'
Depth	: 3.05	10'
Hull Shape	: Rectangular	
Leg Length	: 62.5	205'
Spud Cans Width	: 5.5	18'
Spud Cans Length	: 12.2	40'
Spud Cans Depth	: 1.2	4'
Operating Criteria	: Jacking in water depths of upto 42.7 Meters	
Draft	: 2.24	7' 4"
	Including pads (Minimum Water Depth)	
Deck Area	: 353 sq m	3,800 sq. ft
Max. Deckload	: 400,000 lbs	Deckload pressure 400 pds/sq-ft.

TONNAGE

Gross Tonnage : 417 Tons

ACCOMODATION

48 POB in permanent bunks, Can be Upgraded to 80 TOTAL POB. Upto 65 POB for Client Use

FUEL CONSUMPTION : 757 liters per day on location
 9842 liters per 24 hr day when moving on full load
 480 Volts @ 60 Hz

ELECTRICAL POWER PLANT : 480 Volts @ 60 Hz

MAIN GENERATORS : (2) Nos. Detroit Diesel V1271 each having Kato producing 250 kW

MAIN ENGINES : (4) Nos. Detroit Diesel V1271 producing 1800 HP in Total /1360 bhp

PROPELLERS : (4) 4 blade

JACKING SYSTEM : Hydraulic Drive Rack and Pinion 10 Motors per leg 2 speed jacking System: High 2.7m per minute Low 0.9m per minute

JETTING SYSTEM : EBR Services ,100hp Sulzer pump Capacity 580.5 US gpm. 39 bar manifold max working pressure 600 PSI

CRANES : Port Side, One Manitex 55 Ton @30' with 80' lattice boom Stbd. Side, Otis 99CO2 15 Ton with 70' telescopic boom



LIFE SAVING EQUIPMENT

Liferafts : (4) 25 person Fujikara liferafts, (2) 25 person Zodiac liferafts, (2) 25 person Elliot liferafts

Lifeboats : 1 x 80 Person Lifeboat
 Fast Rescue Boat : (1) 6 pax Fassmer Type RR 4.4 with Yanmar 36 HP Diesel Engine

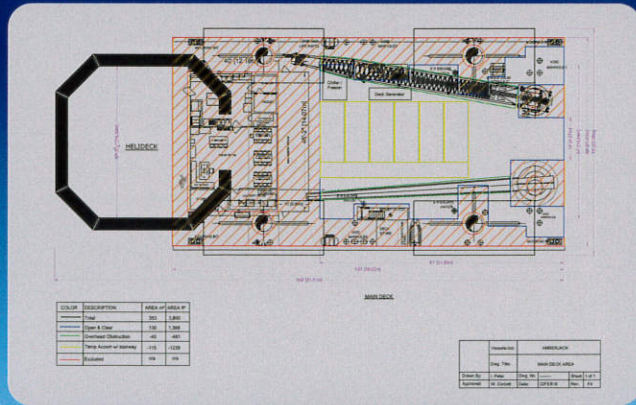
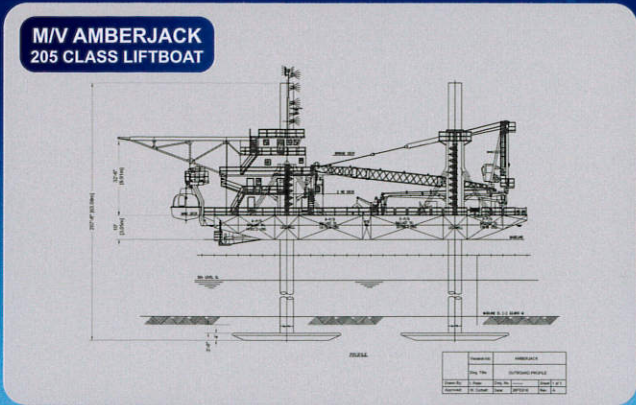
Fixed H2S and LEL Gas Detection System

COMMUNICATION AND NAVIGATION EQUIPMENT

VSAT with VOIP/ Internet available
 Satellite phone : Iridium SC4000
 GMDSS MF/HF/ DSC : SAMYUNG MF/HF DSC; Sailor Inmarsat C
 Navtex : JRC
 EPIRB : SAMYUNG SEP 406
 SART : ACR Model # SART 3
 Public Address : Standard Horizon
 Ship Phone : MRC
 Vhf Radio : (1) Sailor, (2) JRC, (1) Standard Horizon
 (3) MOTOROLA handheld

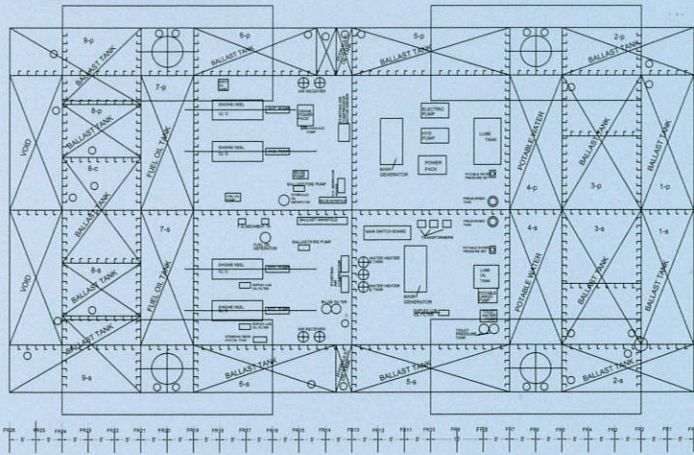
CAPACITIES

Diesel Fuel Storage : 38,000 gallons = 123.7 metric tons
 Potable Water Storage : 38,000 gallons = 144.3 metric tons
 Water Maker : Capacity of producing 8000 gls/day of freshwater
 Sewage System : RedFox Unit with Capacity for 100 Persons
 Safety System : H2S Gas Detection System, Fire detection & Monitors
 Helideck : 15.2 Meters Diameter Cert for Bell 206 – NOT CAP 437



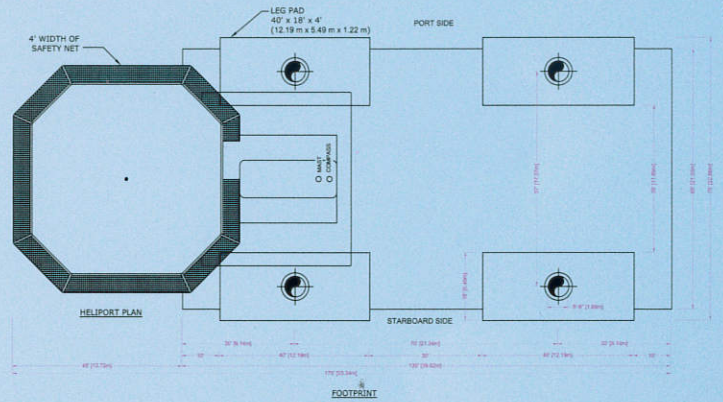
M/V AMBERJACK
205 CLASS LIFTBOAT

TANK PLAN



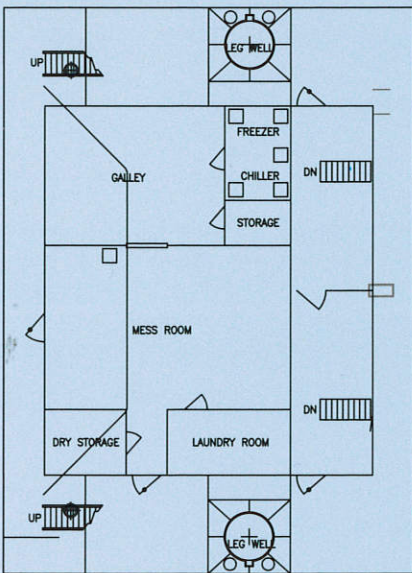
M/V AMBERJACK
205 CLASS LIFTBOAT

FOOTPRINT

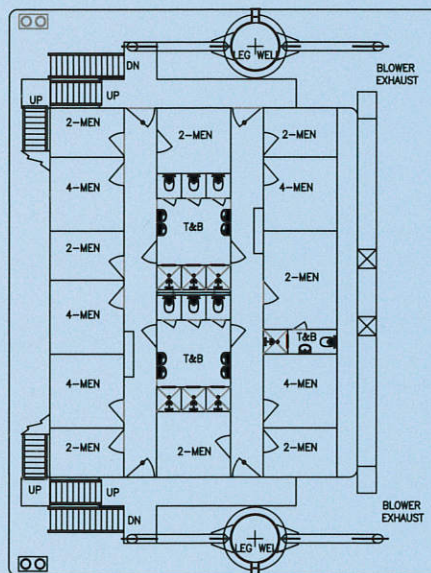


M/V AMBERJACK
205 CLASS LIFTBOAT

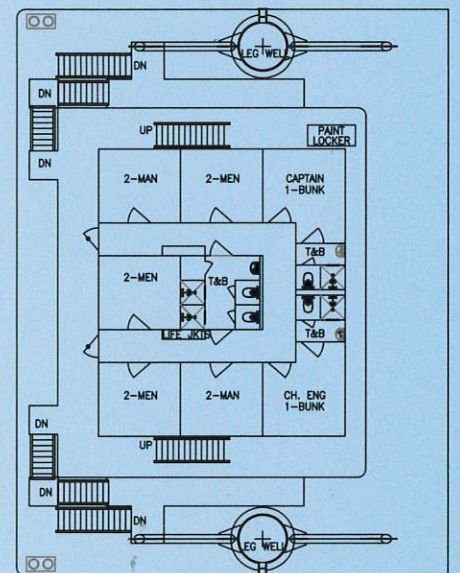
ACCOMMODATIONS



MAIN DECK PLAN



2 ND DECK PLAN

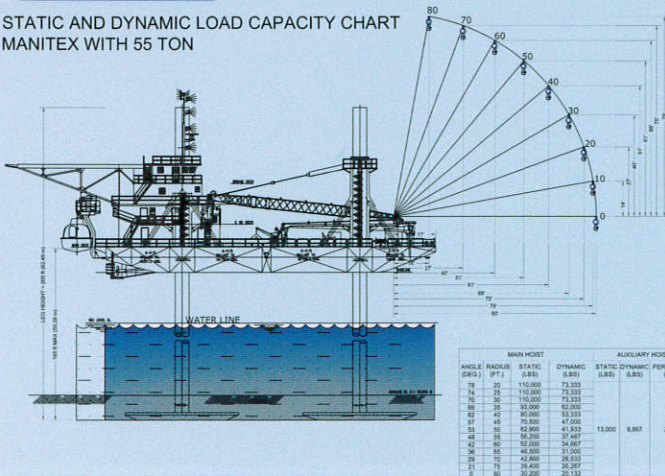


3 RD DECK PLAN

M/V AMBERJACK
205 CLASS LIFTBOAT

CRANE - PORT

STATIC AND DYNAMIC LOAD CAPACITY CHART
MANITEX WITH 55 TON



M/V AMBERJACK
205 CLASS LIFTBOAT

CRANE - STARBOARD

STATIC AND DYNAMIC LOAD CAPACITY CHART
OTIS 99C02 WITH 15 TON SCOPING CRANE
50 FT RETRACTED AND 70 FT EXTENDED

