



"GPK goals and objectives are to provide vessel owners and clients with a reliable, cost effective, safe solution for the operation of their marine assets. Engaged in the offshore marine industry, specializing but not limited to in liftboat activities."

## M/V KINGFISH 229 CLASS LIFTBOAT

### GENERAL INFORMATION

Built : Bollinger Shipyard, USA  
 Date of Built : 1997  
 Major Retrofit : 2012  
 Port of Registry : Panama  
 Flag : Panama  
 Class Society : DNV  
 Type of Vessel : Self Propelled, Self Elevating, 229' Liftboat  
 Max POB : Up to 120 bunks  
 Total :

### PRINCIPAL DIMENSIONS

Length Overall : 40.54 133  
 Overall Breadth : 24.08 79'  
 Overall  
 Depth : 3.96 13'  
 Hull Shape : 128"X79"X13"  
 Leg length : 69.8 229'  
 Spud Cans Width : 4.3m 14'  
 Spud Cans Length : 11.00m 36'  
 Spud Cans Depth : 1.22m 4'  
 Operating Criteria : work in water depth of up to 57.3 m with a 3.05 meter air gap and 0 penetration.  
 Deck Area : 5000 Sq Ft / 464.5 Sq M without upgraded accommodations. Addition of accommodation capacity may decrease deck space, however, our engineers can work to minimize this space decrease.  
 Deck Loading : 500,000 lbs or 227 Metric Tons

### TONNAGE

Gross Tonnage : 1312.00 tons  
 Net Tonnage : 393 tons  
 Draft (Max) : 2.79m 9'-2"

### ENGINES, JACKING SYSTEM, JETTING SYSTEM, CRANES

Fuel : 227.1 liters / hour when cruising, 15.9 liters/hour when idle.  
 Electrical Power plant : 480 volts @ 60 Hz  
 Main Generators : (2) Marathon / 150 KW  
 Emergency Generator : (1) 99 KW  
 Main Engines : (2) 12V149 Ti Detroit Diesels 940 bhp each.  
 Propellers : 2 Stern Propellers  
 Thruster : 1 Bow Thruster Tunnel 440 bhp  
 Jacking System : Hydraulic, Rack & Pinion (opposing) SYSTEM Speed 3.5 Ft/min to 6.0 Ft/min  
 Jetting System : EBR Services , 100hp Sulzer pum Capacity 580.5 US gpm. 39 bar manifold max working pressure 600 PSI  
 Cranes : (1) Titan 100 Ton Crane with 100' Fixed Boom  
 (1) EBI 25 Ton Crane with 70' Fixed Boom

### LIFE SAVING EQUIPMENT

Liferafts : Number of liferafts as per regulatory requirements  
 Lifeboats : 2 x 60 person Lifeboats  
 Fast rescue Boat : SOLAS approved Rescue Boat w/ diesel engine, Capacity 6 persons - Maker: Fassmer

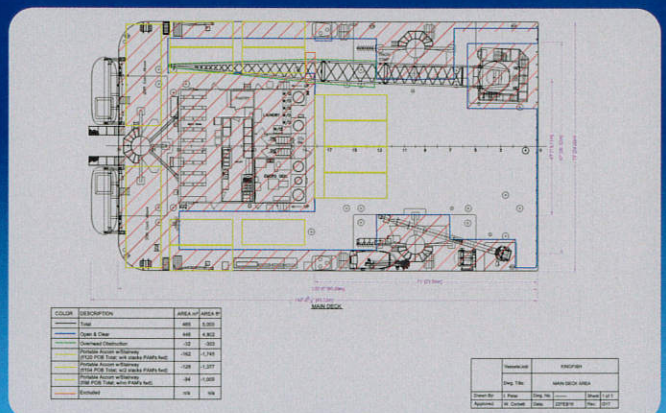
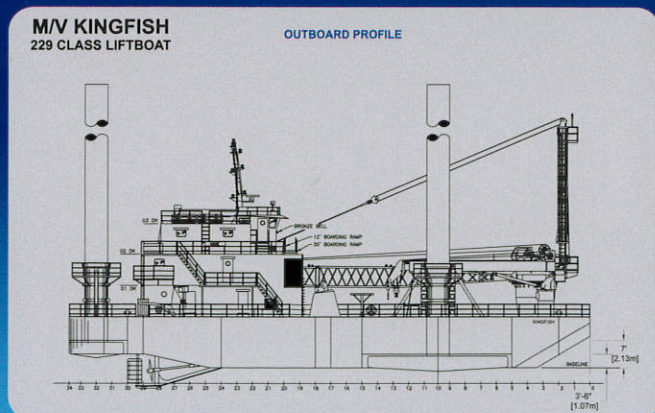


### COMMUNICATION AND NAVIGATION EQUIPMENT

VSAT with VOIP / Internet available  
 Satellite phone : Iridium  
 GMDSS MF/HF/DSC : Furuno - FS - 2511; Furuno - Felcom 15  
 : JRC - NCR 300 R  
 Navtex : GMEMT/ 403FF/32369/700  
 EPIRB : 2 - ACR - SL3  
 SART : Installed and complies with regulatory reqs  
 Public Address : Installed and complies with regulatory reqs  
 Ship Phone : (2) Furuno FM - 8000 + Sea 157 ++ Icom  
 Vhf Radio : Installed and complies with regulatory reqs

### CAPACITIES

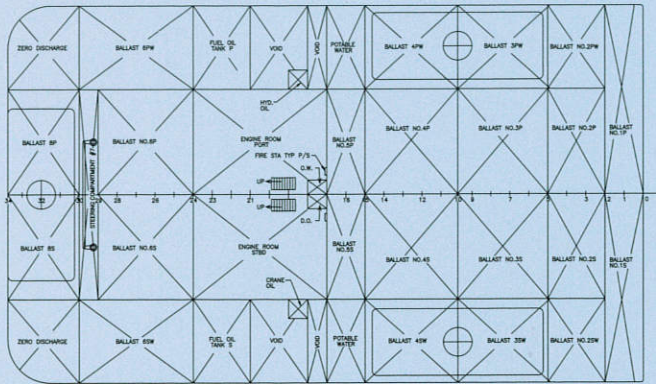
Diesel Fuel Storage : 229,134 liters  
 Capacity  
 Fresh Water Storage : Storage of 229,134 liters  
 Fresh Water Generation : 30,000 liters/day RO Water Maker  
 Safety Systems : Fire Detection, H2S Detection, Tilt Alarm, Engine Alarm, CO2 for engine room & Emergency Generator room, Fire monitors on two bow leg towers  
 Helideck : No helideck





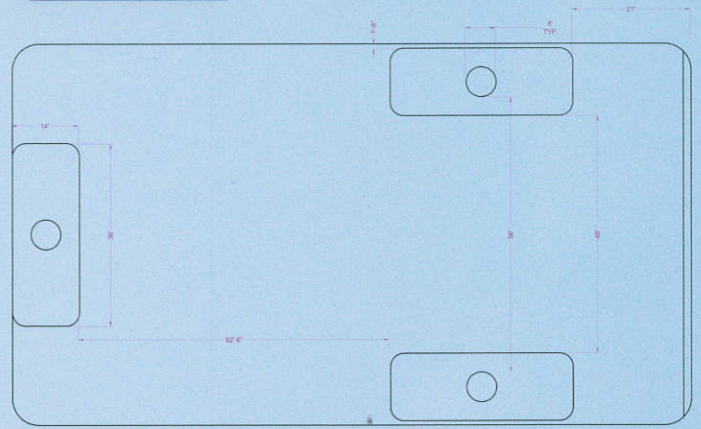
**M/V KINGFISH**  
229 CLASS LIFTBOAT

**TANK PLAN**



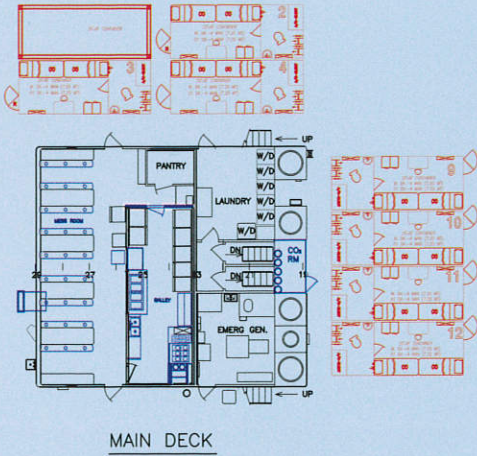
**M/V KINGFISH**  
229 CLASS LIFTBOAT

**FOOTPRINT**

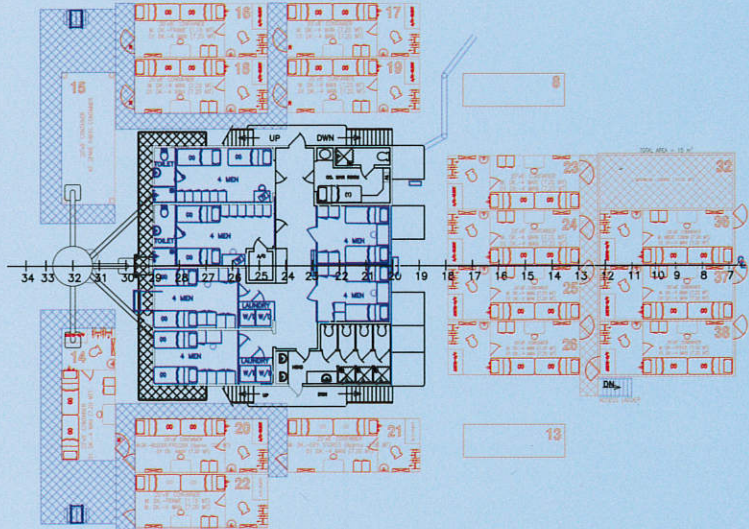


**M/V KINGFISH**  
229 CLASS LIFTBOAT

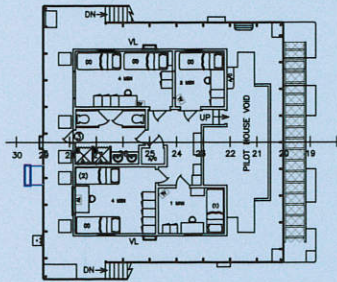
**ACCOMMODATIONS**



**MAIN DECK**



**01 DECK**



**02 DECK**

**M/V KINGFISH**  
229 CLASS LIFTBOAT

**CRANE - PORT**

ENERGY CRANES - MODEL TITAN T18000HC  
LOAD CAPACITY CHART  
GPK MARINE MANAGEMENT SERVICES GROUP FE-LLC

WORKING RADIUS (ft)	BOOM ANGLE (deg)	PORT (B PORT REEFED)			AUXILIARY HOIST		
		STATIC CAPACITY (LBS)	DYNAMIC CAPACITY (LBS)	PERSONAL RATED CAPACITY (LBS)	STATIC CAPACITY (LBS)	DYNAMIC CAPACITY (LBS)	PERSONAL RATED CAPACITY (LBS)
100.0	82	12,000	10,000	12,000	12,000	10,000	12,000
90.0	80	12,000	10,000	12,000	12,000	10,000	12,000
80.0	78	12,000	10,000	12,000	12,000	10,000	12,000
70.0	76	12,000	10,000	12,000	12,000	10,000	12,000
60.0	74	12,000	10,000	12,000	12,000	10,000	12,000
50.0	72	12,000	10,000	12,000	12,000	10,000	12,000
40.0	70	12,000	10,000	12,000	12,000	10,000	12,000
30.0	68	12,000	10,000	12,000	12,000	10,000	12,000
20.0	66	12,000	10,000	12,000	12,000	10,000	12,000
10.0	64	12,000	10,000	12,000	12,000	10,000	12,000
0.0	62	12,000	10,000	12,000	12,000	10,000	12,000

THE ABOVE RATINGS ARE BASED ON AIR 20 THE 3TH EDITION  
800S INCLUDE THE WEIGHT OF THE LOAD BLOCK  
WIND & SWAY LINE DRIVING RATING IS BASED ON 2.0 DYNAMIC FACTOR  
THE WEIGHT ON THE LOAD BLOCK MUST BE RELEASED INTO  
THE WEIGHT OF THE LIFTED LOAD  
USE STATIC RATED CAPACITIES FOR LIFTING FROM OR LANDING ON PLATFORMS  
USE DYNAMIC RATED CAPACITIES FOR LIFTING FROM OR LANDING ON FLOATING VESSELS

**WARNING**  
OPERATION OF THIS EQUIPMENT BY PERSONNEL  
NOT QUALIFIED IS STRICTLY PROHIBITED  
ENERGY CRANE

**M/V KINGFISH**  
229 CLASS LIFTBOAT

**CRANE - STARBOARD**

STATIC AND DYNAMIC LOAD CAPACITY CHART  
EBI 25 TON CRANE WITH 70' FIXED BOOM

